

## xTOOL Concealed thermostat module -

---

35 517 970



- red brass, lead-free
- 2x back flow preventer
- integrated pre-seals
- 3/4" (cold/hot) connection
- female thread 3/4" connection
- thermostat cartridge
- dust cover
- anti-water packing
- soundproofing

---

### Recommended miscellaneous

**Extension 28 mm -**

12 177 970 90



---

### Recommended miscellaneous

**Extension 46 mm -**

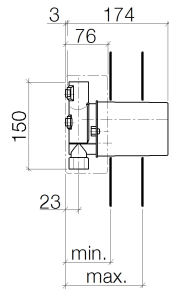
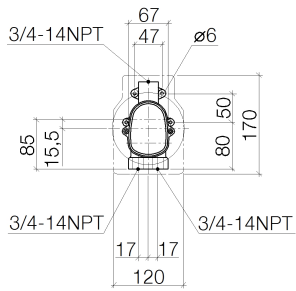
12 178 970 90





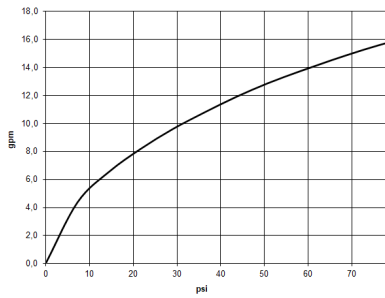
## xTOOL Concealed thermostat module -

35 517 970



Source	min	max
Circle	80	110
Lulu	80	110
Madison	80	110
Madison Flair	80	110
TARA LOGIC	80	110
Mets.O2	80	110
Soul	80	110
Square	80	110
Cult	80	110
L'Aura	80	110
Domici	85	110
Just	80	155
LaFleur	95	160
SUPERNOVA	95	160
Symetria	95	160
VEQUE	95	160
Tara.	95	160
MEM	115	156
CL.1	115	156

### Flow rate chart



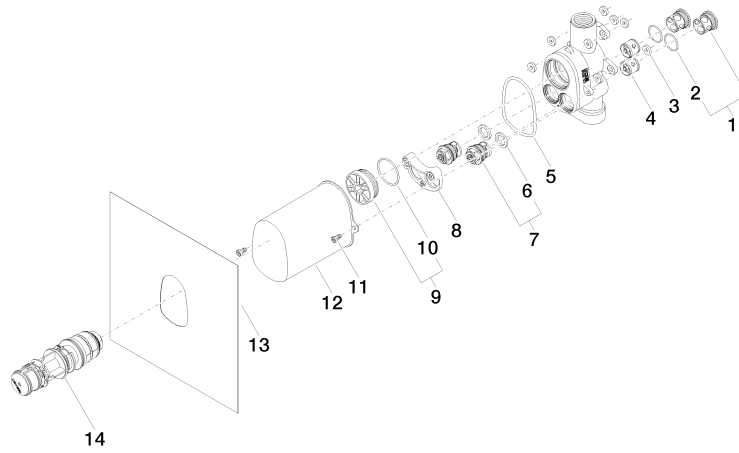
35517970-900010 + 36416/417 xxx-FF

### Certificates

IAPMO\_4976 (3).

**xTOOL Concealed thermostat module -**

35 517 970



**Spare parts list**

No.	Item Number	Name	Quantity used	Delivery time
1	04 21 34 077 00 90	nipple	2	2
2	09 14 10 098 90	seal	2	2
3	04 14 05 045 00 90	set	8	2
4	90 23 01 045 00 90	back-flow preventer	2	2
5	09 14 10 189 90	seal	1	2
6	09 14 05 002 90	seal	2	2
7	90 29 05 031 00 90	insert	2	2
8	90 12 12 218 00 90	base	1	2
9	04 31 20 100 00 90	plug	1	2
10	09 14 10 111 90	seal	1	2
11	90 30 30 027 00 90	screw	2	2
12	09 21 02 103 90	cap	1	2
13	04 14 03 073 04 90	gasket kit	1	2
14	90 15 02 065 00 90	cartridge	1	2